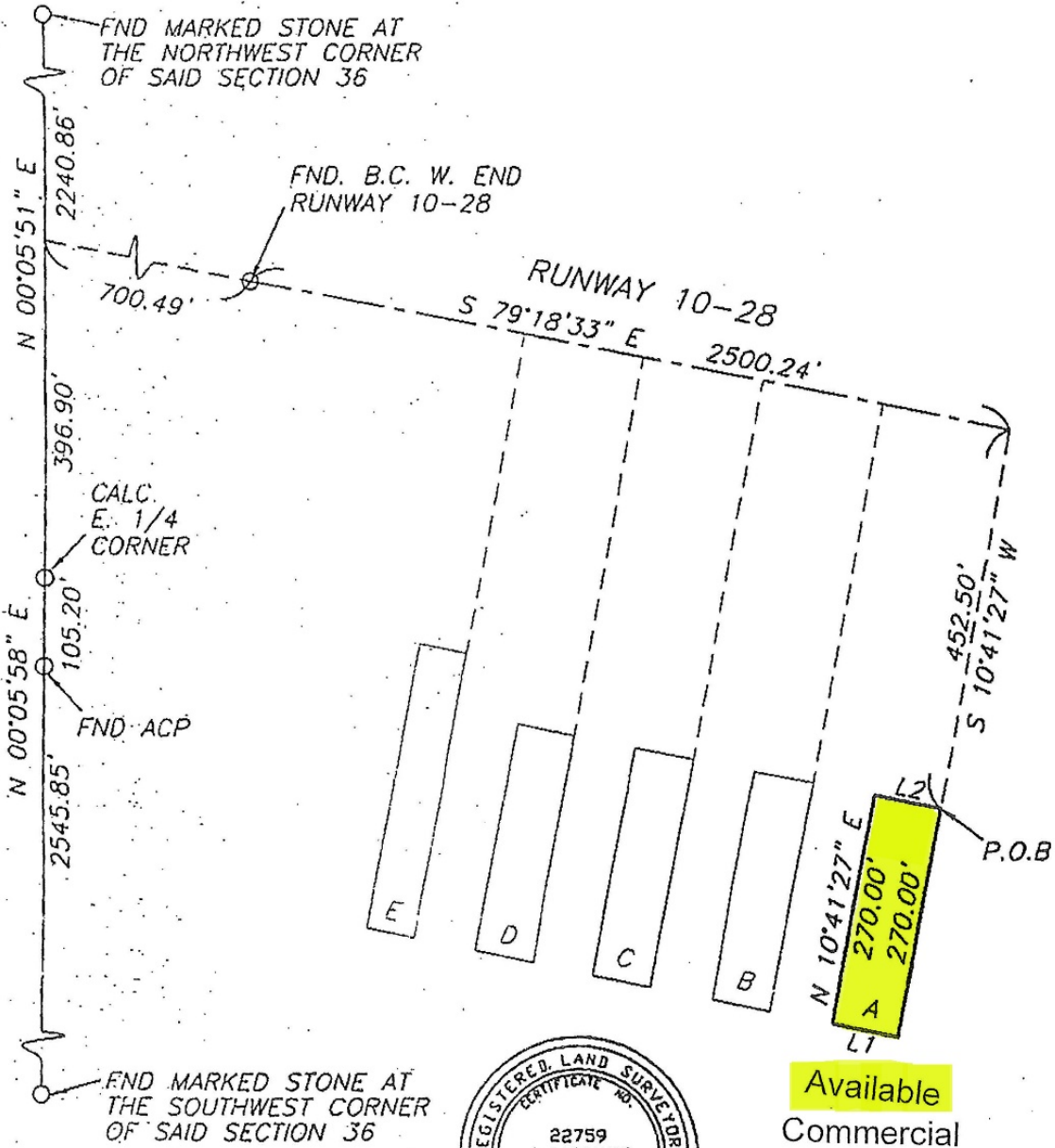


EXHIBIT

A PORTION OF THE SOUTH HALF OF SECTION 36, TOWNSHIP 16 SOUTH, RANGE 19 EAST, GILA AND SALT RIVER MERIDIAN, COCHISE COUNTY, ARIZONA, SAID PORTION BEING DESCRIBED AS FOLLOWS



Available
Commercial



NUMBER	DIRECTION	DISTANCE
L1	N 79°18'33" W	80.00'
L2	S 79°18'33" E	80.00'



TETRA TECH, INC.
 INFRASTRUCTURE SOUTHWEST GROUP
 33 N. Stone, 15th Floor
 Tucson, AZ 85701 (520) 623-7980

DATE AUG 01
 JOB NO. 4201

SA:\JOBS\4281\2000\EXHIBITS